



Canadian Lutheran
World Relief



2021-2022

ANNUAL REPORT



**Canadian Lutheran
World Relief**

OUR VISION

A healthy and sustainable world where people live in peace with hope, justice, dignity and equality.

OUR MISSION

Inspired by God's love for the world, CLWR challenges and responds to the injustice which causes human suffering and poverty.

After conflict kept her from harvesting crops, Kidist Teshome (also pictured on the front cover) eventually had to flee her home community when her husband was shot and wounded due to the war in Ethiopia in 2021. Kidist is one of the recipients of lifesaving food assistance in Amhara, Ethiopia. "Due to this support, I can feed my son," she says. "You were here for us at a very crucial time." (Photo: CLWR/Genaye Eshetu)



GREETINGS

DEAR FRIENDS,

What a year it's been.

Early in 2022, we were all horrified at the return of open war to Europe. And as that crisis has dominated headlines, so many other locations around the world have faced immense challenges that have gone mostly unreported, from conflict, to drought, to sudden disaster. And while we know that our warming world will bring the risk of more hunger, I was alarmed at the severity of the hunger crisis that swept across parts of Sub-Saharan Africa this year.

The world can change so quickly. That's why I'm so thankful that some things **don't**.

For 76 years, Lutherans in Canada have offered partnership with people around the world who are facing disaster, war and injustice. This mission has persevered through decades, through wars and disasters, as one generation passes the torch to another.

Today, you are a vital part of the community

that is carrying out that mission. And because of your part in this, the impact of this partnership is growing.

We're establishing new relationships with communities we haven't worked in. And we're responding directly to challenges like the war in Ukraine and a global food crisis.

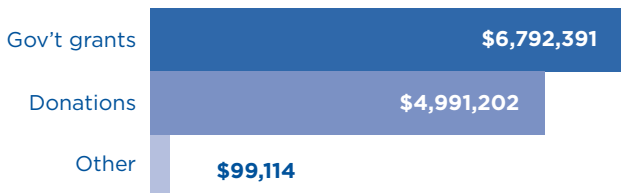
I can't put it any more clearly than what Kidist said (pictured to the left). "Because of this support, **I can feed my son.**"

On behalf of our team, our partners, and thousands of people like Kidist, please accept my thanks for carrying the torch. I hope the stories that follow in this report will uplift and encourage you in this mission we share.

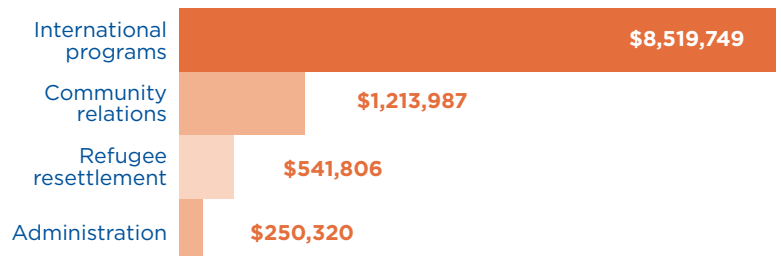
Deepest blessings,

Karin Achtelstetter, Executive Director

REVENUE



EXPENSES





Hungarian Interchurch Aid staff and volunteers distribute water and diapers to a refugee shelter close to Lviv. On March 10, there were approximately 150 refugees staying in the shelter. Some of them stay longer, some of them just for a couple of hours. Most of them were women and children who have fled the war in other parts of Ukraine. (Photo: ACT Alliance/FCA)

EMERGENCY RESPONSES

When an earthquake, hurricane or other hazard strikes a region where CLWR isn't operating, we partner to mobilize an immediate response through ACT Alliance, a coalition of 135 church bodies and faith-based organizations across 120 countries. Crucially, this partnership allows us to respond to disasters that are devastating communities even if they aren't making the news in Canada.

Below are some of our recent emergency responses together with ACT Alliance:

HAITI

When a major earthquake struck Haiti in August 2021, CLWR responded immediately through partners in ACT Alliance. Funding from CLWR donors and the Humanitarian Coalition allowed our partners to deliver lifesaving relief and medical assistance to those affected by the catastrophic earthquake, providing immediate shelter, basic necessities and unconditional cash grants to displaced families as well as rehabilitating affected homes.



Lviv Railway Station. March 11, 2022.
(Photo: ACT Alliance/FCA)

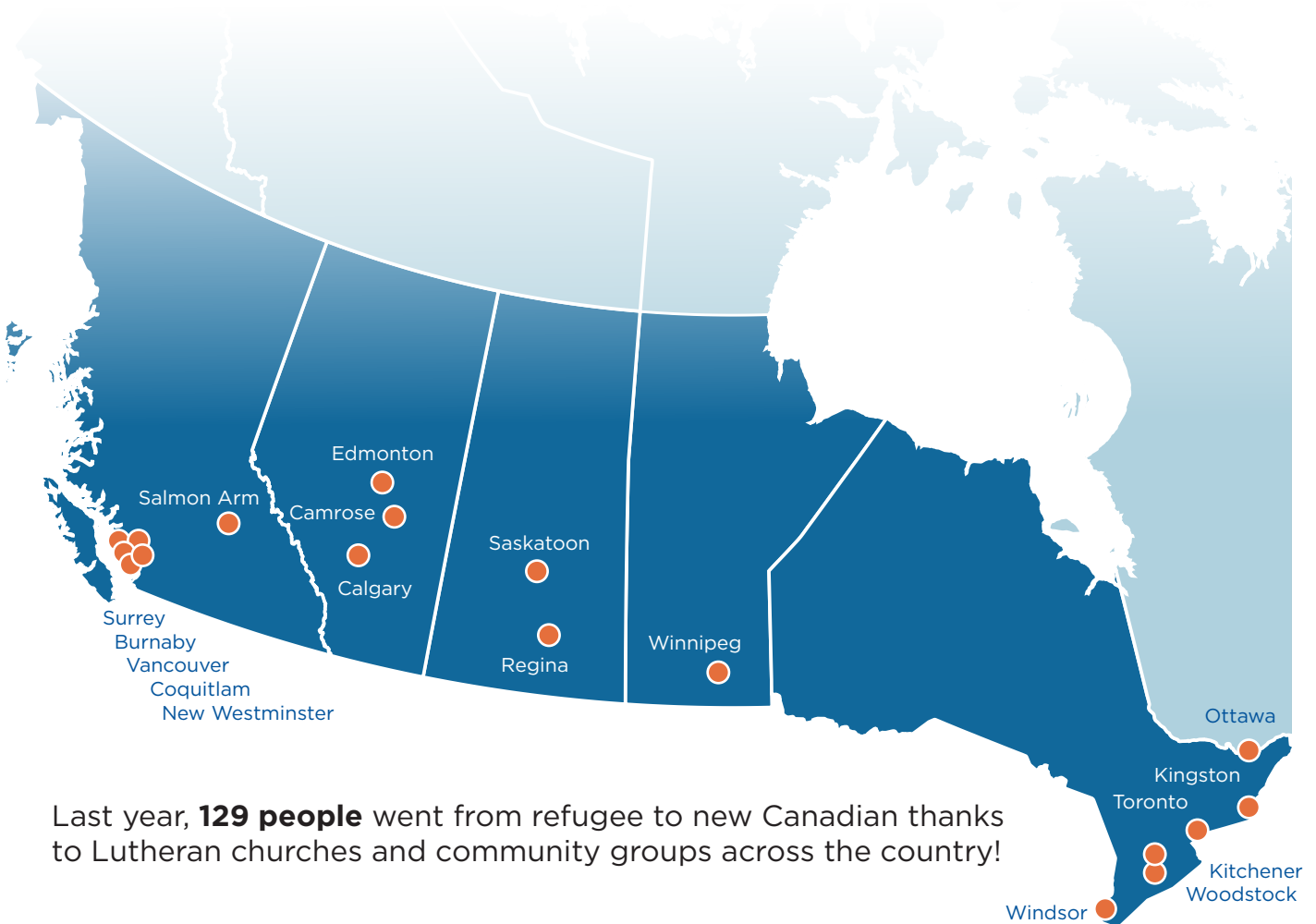
INDIA

In the spring of 2021, India faced a particularly catastrophic wave of COVID-19. With a death toll that quickly rose past 200,000 and health services across the country overwhelmed, CLWR partnered with ACT Alliance to respond with emergency medical support, vaccine access, and supporting public awareness campaigns to keep as many people safe as possible.

UKRAINE

CLWR's partners in the ACT Alliance, including Hungarian Interchurch Aid, were among the best-positioned to immediately respond when war began in Ukraine. Since the first days of the war, CLWR has supported partner efforts through ACT Alliance and LWF to provide emergency relief and assist those who have been forced to flee.

REFUGEE RESETTLEMENT



Last year, **129 people** went from refugee to new Canadian thanks to Lutheran churches and community groups across the country!

ARRIVALS LAST YEAR

129

COUNTRIES OF ORIGIN

Afghanistan,
Burundi, DR Congo,
Ethiopia, Eritrea, Iraq,
Myanmar, Somalia,
Sudan, Syria

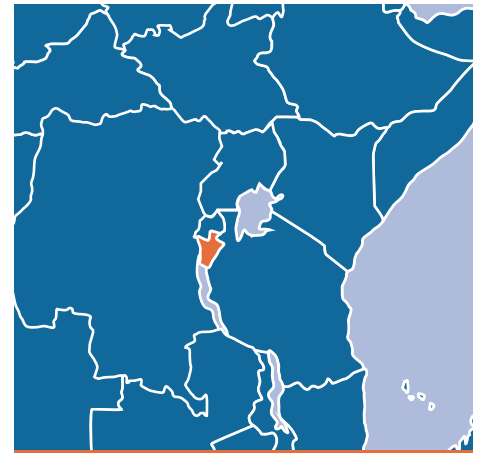
Zhenda and Sipan (left), a Kurdish-Syrian sister and brother, arrived with their spouses and children to Salmon Arm, BC in June 2021 from Irbil, Iraq. (Photo: Helen Stoddart)



BURUNDI

Following on a successful short-term intervention in 2021, CLWR and Canadian Foodgrains Bank launched a new multi-year project focused on bridging the gap between emergency support and addressing the long-term barriers that families face in restarting their lives.

Together with Canadian Foodgrains Bank, CLWR began an emergency response both to address immediate food shortages and hunger, and to help communities build longer-term food security.



BENEFICIARIES

6,060

FOCUS AREAS

Food security, nutrition, climate adaptation, livelihoods, gender equity

KEY IMPACTS

40

12-month farmer field schools offered across 15 villages

2,790

people receiving emergency food support

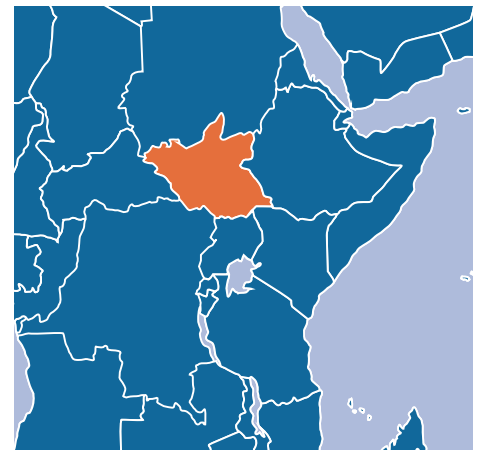
1,200

households receiving farm starter kits, including seeds, inputs, small livestock

SOUTH SUDAN

Conflict, flooding, COVID-19 and a historic locust invasion have put families in South Sudan in a complex and unimaginable humanitarian crisis. 800,000 were affected by the flood crisis alone—many left without housing, livestock, or crops.

In the spring of 2022, CLWR and Canadian Foodgrains Bank provided emergency support to 418 families in Jonglei State during a period of acute food shortage before rains started in June.



BENEFICIARIES

2,282

FOCUS AREAS

Food security, nutrition, gender equity, emergency response

KEY IMPACTS

418

families with emergency food support during the critical dry period

313

vulnerable female-headed households targeted for emergency support

EL SALVADOR

El Salvador is one of the most vulnerable countries to climate risks in the world, as small-scale farmers face the threat of increasingly unpredictable rainfall and temperatures.

Already, more than half of households in El Salvador are suffering from some degree of chronic food insecurity. The farmers bearing these risks often face the trap of needing to borrow to finance inputs, losing those inputs to climate-related shocks, then falling further into debt. And many face significant barriers in accessing traditional crop insurance, making their livelihoods precarious and putting food security in their communities even more at risk. This new project, using a model that's new to both CLWR and Canadian Foodgrains Bank, is helping farmers access climate-indexed crop insurance, with payments automatically dispersed based on real-time satellite data.



BENEFICIARIES

3,000

FOCUS AREAS

Food security, climate adaptation, livelihoods, gender equity

KEY IMPACTS

600

families protected from drought and flood by weather-indexed climate insurance

360

female-headed households less likely to take measures like selling land or migrating

Leonel Enriquez Luna Bermudes in front of his maize field in the rural area of Cerro Nanzal in Santa Elena, part of the Dry Corridor in Central America. (Photo: CLWR/Juan Carlos)

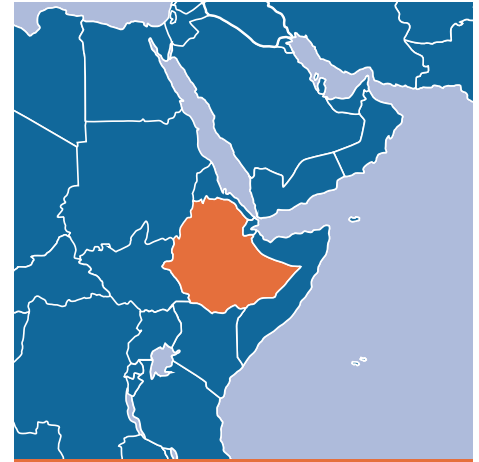


ETHIOPIA

In recent years, Ethiopia has faced internal conflict and repeated droughts, as the impacts of climate change are felt at a faster rate than in much of the world.

In East Hararghe zone, over 200,000 displaced people are living in host communities, putting tremendous strain on these communities. Families lack access to drinking water, sanitation and basic supplies, and some lack even a basic shelter. Through CLWR's partners, LWF Ethiopia, your support has provided shelter, sanitation facilities, and income opportunities, plus wells and ponds to provide clean water for 49,000 people.

In Afar, CLWR partners used modern irrigation schemes and watershed management to provide whole communities water to farm with, giving thousands of people better access to nutritious, local food.



BENEFICIARIES

58,482

FOCUS AREAS

Food security, nutrition, climate adaptation, livelihoods, gender equity, emergency response

KEY IMPACTS

700

farm families have better access to water, supplies and training to farm crops and livestock

300,000

tree seedlings distributed to help rehabilitate watersheds

49,000

displaced people have improved access to water, sanitation and hygiene facilities

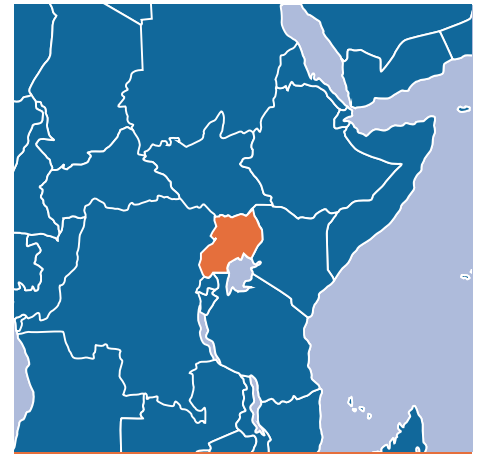
Mekdes, pictured with her son Abraham in Amhara region, Ethiopia, received emergency support after fleeing conflict. (Photo: CLWR/Genaye Eshetu)



UGANDA

While the civil war in South Sudan officially ended in 2020, hundreds of thousands of refugees remain across the border in Northern Uganda. Humanitarian funding has not kept pace with growing needs. Building on a history of work in the region with LWF Uganda, CLWR is providing life-saving support, including improving safe water sources, ensuring access to hygiene facilities and supplies (including menstrual health management), developing income generation opportunities, and making camps safer.

Because of high rates of women who have suffered from sexual and gender-based violence, the project prioritizes protection work as a key part of our response. This includes community sensitization, protection services for survivors and women at risk, and health and support services. This project is possible because of your donations, and thanks to the support of the Government of Canada.



BENEFICIARIES

24,070

FOCUS AREAS

**Water, sanitation,
livelihoods, protection,
refugees**

KEY IMPACTS

10

community water
points rehabilitated

1,625

people with the
support and training
to start businesses

150

latrines constructed or
repaired

Joyce Angeyo, who fled with her family from South Sudan to Uganda, participates in training programs offered at the youth center run by CLWR partner LWF Uganda at the Palabek refugee settlement. (Photo: LWF Uganda)

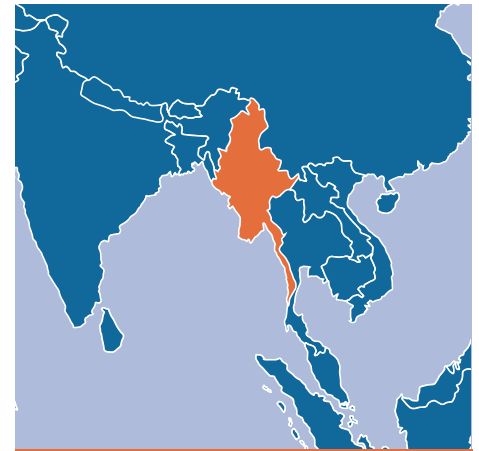


MYANMAR

In a region already vulnerable to natural hazards, displaced Rohingya people are facing widespread discrimination, violence, food insecurity and COVID-19. Through our longstanding partnership with LWF Myanmar, CLWR is responding to the needs of these vulnerable populations.

Based on the priorities identified by community members, our focus is on basic urgent needs including access to clean water, hygiene supplies, and safety and security for women and girls. The project has a particular focus on building increased representation and leadership of women in community decisions and local institutions.

Your support allows us to partner with a leader in the area of protection and women's empowerment in Myanmar. This project is possible because of your donations, and thanks to the support of the Government of Canada.



BENEFICIARIES

28,973

FOCUS AREAS

**Shelter, water, hygiene,
protection, gender
equity**

KEY IMPACTS

2,926

families with new
access to sanitation
facilities

18

women's and girls'
centers supported in
camps and villages

30

longhouses
reconstructed and
weather-proofed

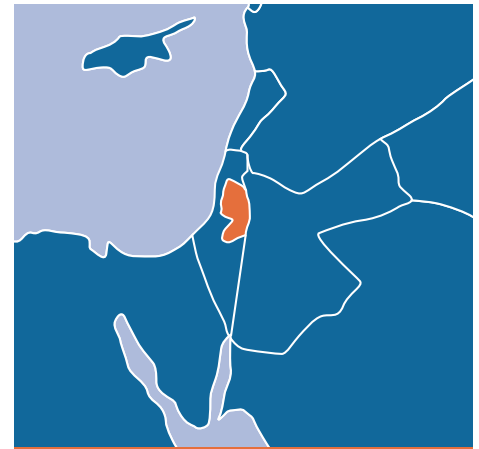
Children collect water from a
new community water point.
(Photo: CLWR/Ahkhee Chel)



PALESTINIAN TERRITORIES

Unemployment is a key driver of poverty among Palestinians, with especially high rates among female youth and people with disabilities. Building off of years of success operating technical and vocational education programs, CLWR and LWF Jerusalem are mid-way through a major five-year project, with funding from Global Affairs Canada, supporting women and people with disabilities in accessing technical and vocational education. “GRIT,” as the project is known, is growing the quality and offerings of existing schools and supporting individual women in accessing these programs.

CLWR also continues to provide support for Augusta Victoria Hospital as it adapts to maintain critical medical services during the global pandemic.



BENEFICIARIES

20,000

FOCUS AREAS

Education, poverty reduction, gender equity

KEY IMPACTS

1,143

women in technical or vocational programs

912

permanent new spaces created for women

112

women with disabilities receiving accessible technical or vocational training

GRIT Ambassador Jihad Baba, who received vocational training in mobile maintenance, repairs mobile phones at a shop in Ramallah. As an Ambassador, Jihad works with GRIT to promote technical and vocational training to women and girls in the West Bank. (Photo: CLWR/Andrea Krogmann)



NICARAGUA

Violence in 2018 and the unemployment that followed have reduced education rates in Nicaragua, as parents have struggled to keep their children in school and children with disrupted education have struggled in class. Together with Lutheran Church-Canada and the Christian Mission Association in Nicaragua, CLWR is providing bursaries to keep children in school, provide additional tutoring and provide in-school meals to children facing hunger.



BENEFICIARIES

250

FOCUS AREAS

Shelter, water,
hygiene, gender
equity

KEY IMPACTS

250

children receiving
educational
support

125

children with
regular in-school
meals

10

communities receiving
support for some of their
most vulnerable students

VENEZUELA

The COVID-19 pandemic has been devastating across the world, but in regions that already lacked adequate health care, the virus has been overwhelming. In one of the poorest districts of Caracas, Venezuela, CLWR partnered with a local medical clinic struggling to maintain vital health services to a community that otherwise might not have access to critical health care. CLWR's partnership meant the clinic was able to increase its capacity and meet more urgent needs in its community.



BENEFICIARIES

9,150

FOCUS AREAS

Health, poverty
reduction

KEY IMPACTS

1,700

children
receiving
pediatric care

39

front-line personnel provided
with medical equipment and
protective materials

6,021

women and
girls received
medical care

Kaburo Domitien moved with his wife Sophie and children looking to escape drought and hunger, and the extreme poverty that has prevented his children from going to school. Domitien's disability leaves him unable to work, and the family relies on Sophie's income. The family received emergency food assistance from CLWR to help with the short-term while COVID-19 disrupted food supply, and Sophie has joined a local savings and loan group run by LWF as part of the project. They're looking forward to having enough to escape poverty and keep the children in school. (Photo: CLWR/Arnaud Mugisha)



Proud to partner with



In partnership with _____





Participants gather for a food distribution in Kavumu, Burundi. (Photo: CLWR/Arnaud Mugisha)



Canadian Lutheran
World Relief

600-177 Lombard Avenue, Winnipeg, Manitoba R3B 0W5 Canada

PHONE: 204.694.5602 | TOLL-FREE: 800.661.2597

FAX: 204.694.5460 | EMAIL: clwr@clwr.org

www.clwr.org